



ELEVATION A



ELEVATION B



ELEVATION C



ELEVATION A
WITH OPTIONAL 3-CAR GARAGE



ELEVATION B
WITH OPTIONAL 3-CAR GARAGE

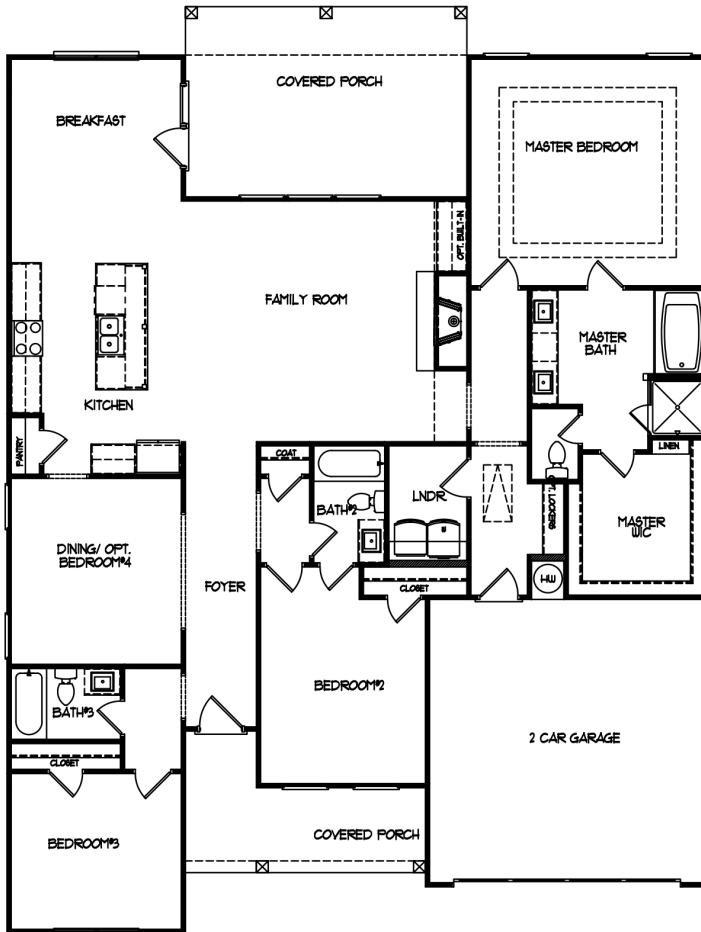


ELEVATION C
WITH OPTIONAL 3-CAR GARAGE

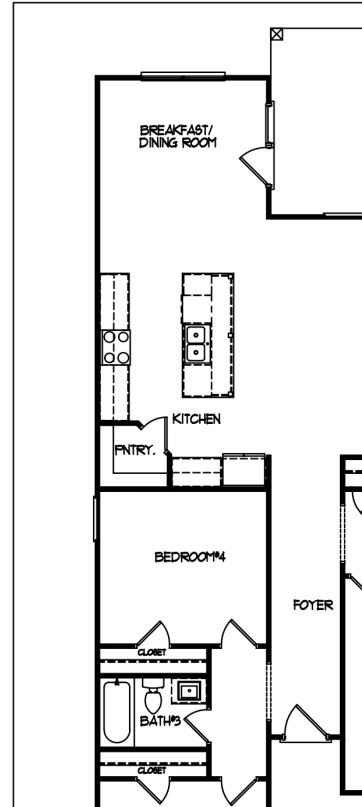


**SOUTHERN
HERITAGE
HOMES**

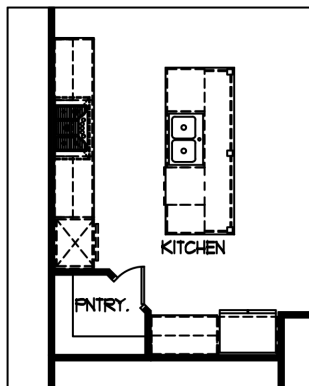
Park Ridge
THE ROSEWOOD



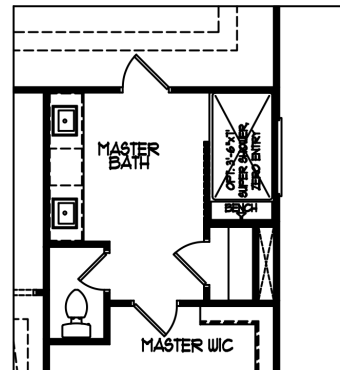
MAIN LEVEL



OPTIONAL
4TH BEDROOM



OPTIONAL
LUXURY KITCHEN



OPTIONAL
SUPER SHOWER



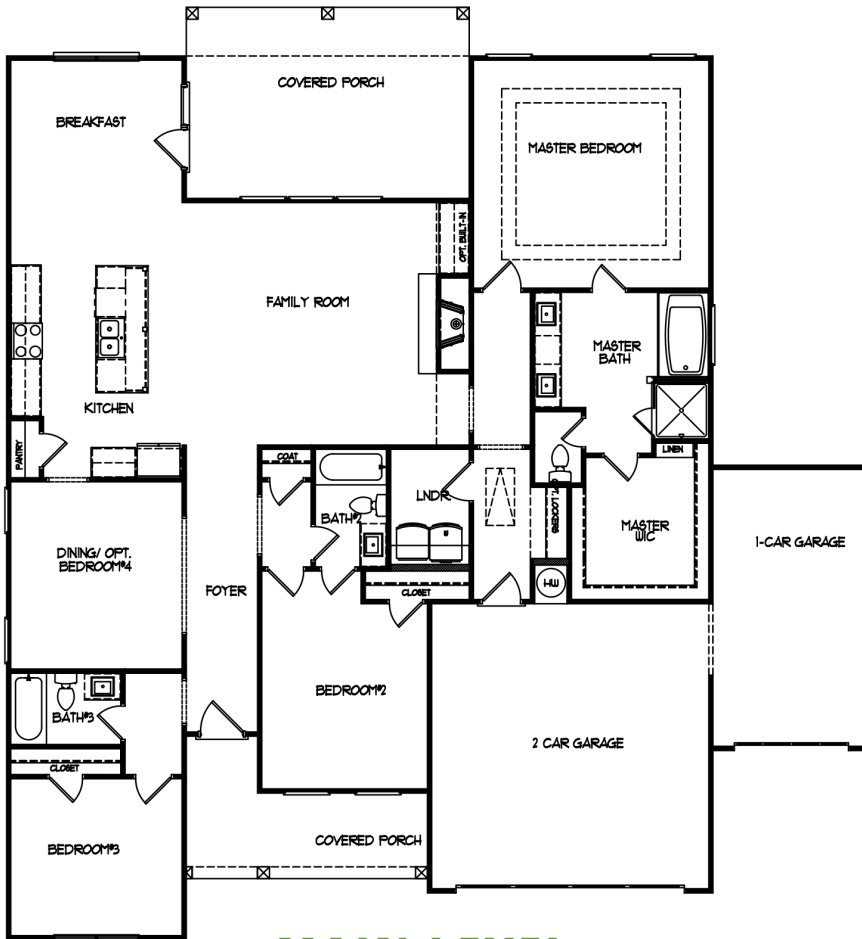
All home and community information (including but not limited to any and all pricing, availability, incentives, floor plans, site plans, features, utility information standards and options assessments, fees, planned amenities, special offerings, conceptual artists' renderings and community development plans, square footage and dimensions) is not guaranteed and remains subject to change, availability or delay without notice. Maps are not to scale. Actual siting of homes will be determined by the site and plot plan. All floorplans are property of the Builder. For any questions, please see a Sales Associate. Sales and Marketing by Tamra Wade Team. 2-22-24

RE/MAX ^{TRU}
— POWERED BY —
TAMRA WADE

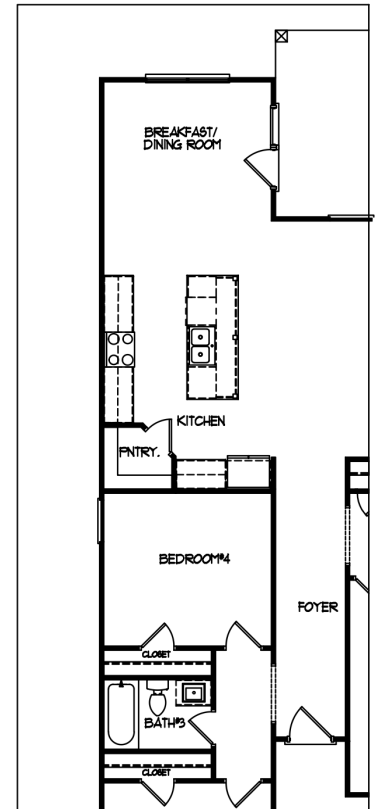


**SOUTHERN
HERITAGE
HOMES**

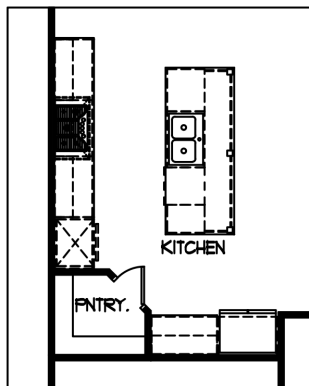
Park Ridge
THE ROSEWOOD



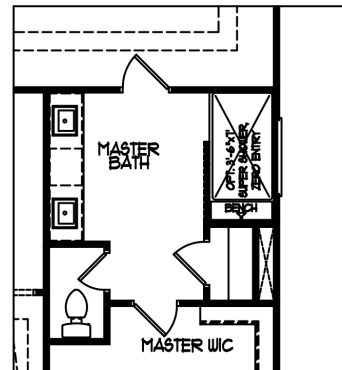
MAIN LEVEL
WITH OPTIONAL 3-CAR GARAGE



OPTIONAL
4TH BEDROOM



OPTIONAL
LUXURY KITCHEN



OPTIONAL
SUPER SHOWER



All home and community information (including but not limited to any and all pricing, availability, incentives, floor plans, site plans, features, utility information standards and options assessments, fees, planned amenities, special offerings, conceptual artists' renderings and community development plans, square footage and dimensions) is not guaranteed and remains subject to change, availability or delay without notice. Maps are not to scale. Actual siting of homes will be determined by the site and plot plan. All floorplans are property of the Builder. For any questions, please see a Sales Associate. Sales and Marketing by Tamra Wade Team. 2-22-24

RE/MAX ^{TRU}
— POWERED BY —
TAMRA WADE