

TOWNS

— AT —

WEBB GIN

The Oakwood
4 BD | 3.5 BA | 2,219 SQ. FT.



ELEVATION A



ELEVATION B



ELEVATION C



ELEVATION D



WALKER
ANDERSON 

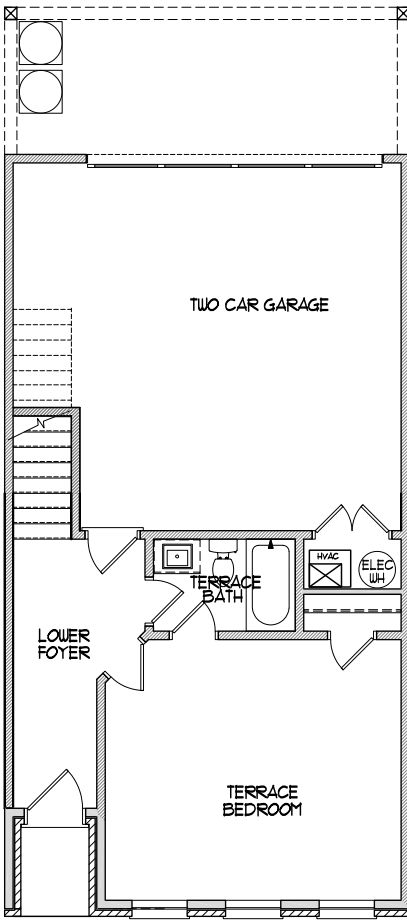


TOWNS

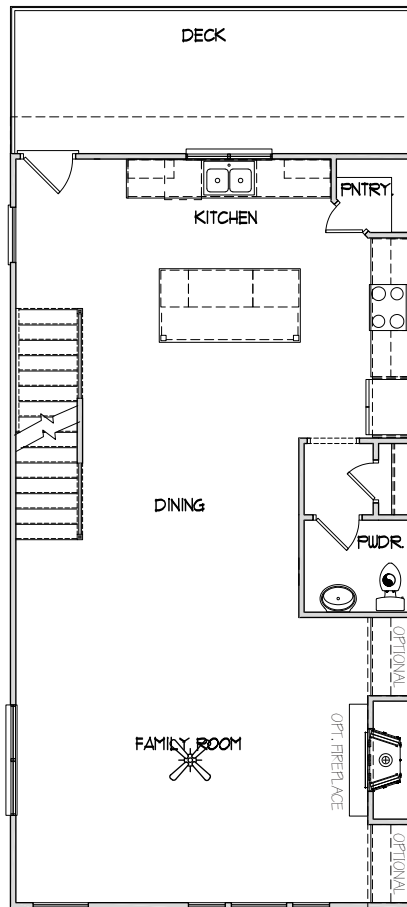
— AT —

WEBB GIN

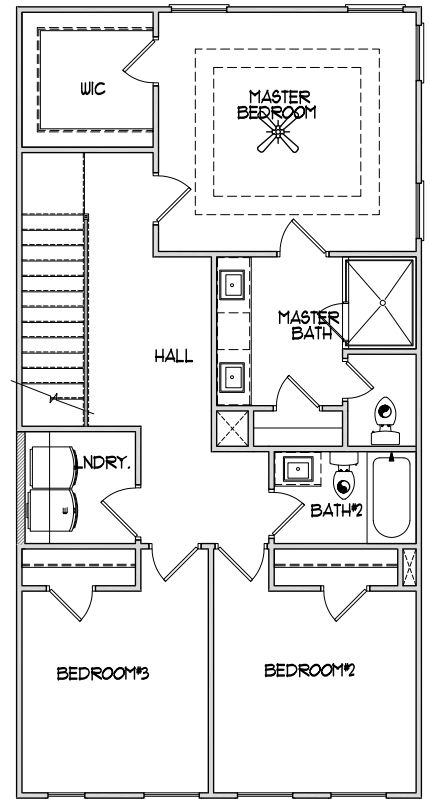
The Oakwood
 4 BD | 3.5 BA | 2,219 SQ. FT.



TERRACE
 LEVEL



MAIN
 LEVEL



UPPER
 LEVEL

*Windows shown on side elevations above are applicable on end units only on the exposed side.



WALKER
 ANDERSON

