
CARIE

HERON BAY



3 Beds | 3.5 Baths | 2,941 Sq. Ft.

770-502-6230 | [HeatherlandHomes.com](https://www.HeatherlandHomes.com)



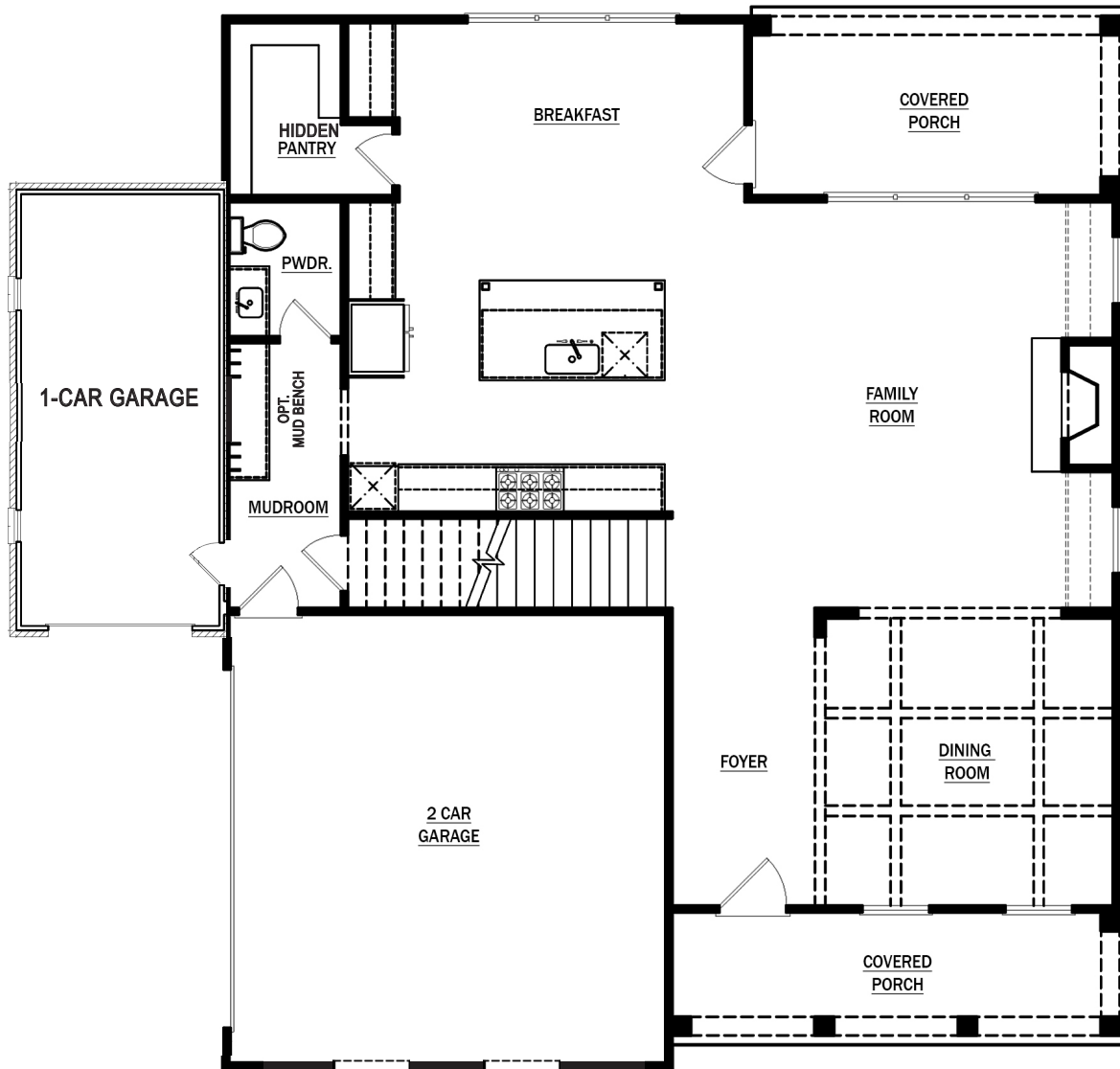
Prices, plans, elevations, square footage, specifications, materials, and included features are subject to change at any time without notice or obligation. Drawings, renderings, images, square footage, plans, elevations, features, colors and sizes are approximate and may vary from the actual homes built. © 2021 Tamra Wade Team of RE/MAX TRU (770) 502-6230. All rights reserved.

Revised 2-19-21

RE/MAX TRU
— POWERED BY —
TAMRA WADE

CARIE

HERON BAY



FIRST FLOOR

770-502-6230 | HeatherlandHomes.com

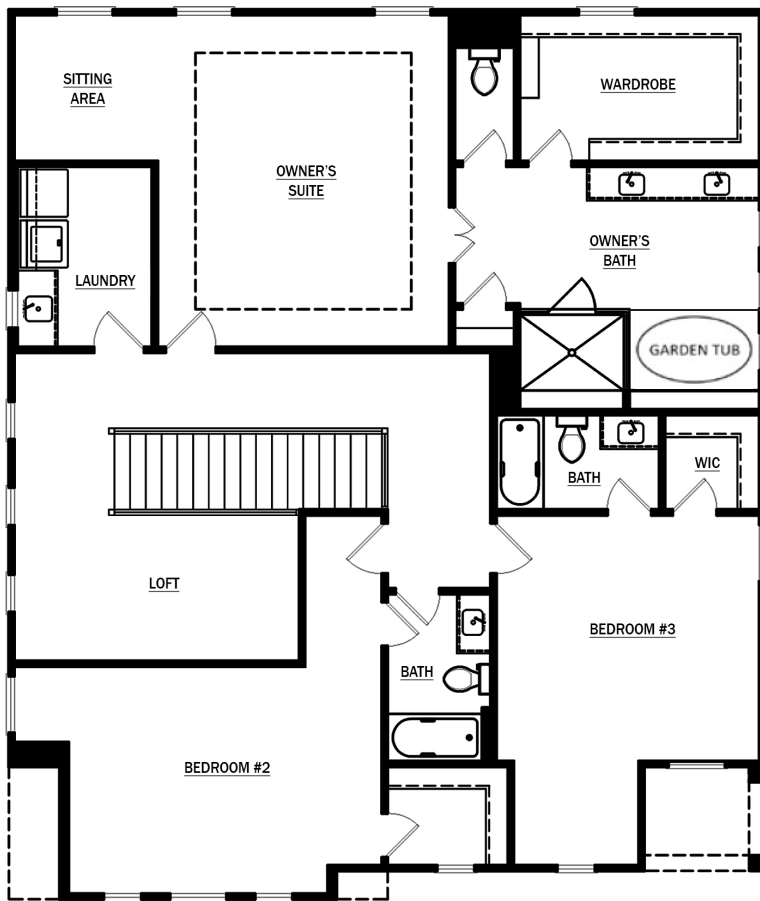


Prices, plans, elevations, square footage, specifications, materials, and included features are subject to change at any time without notice or obligation. Drawings, renderings, images, square footage, plans, elevations, features, colors and sizes are approximate and may vary from the actual homes built. © 2021 Tamra Wade Team of RE/MAX TRU (770) 502-6230. All rights reserved.

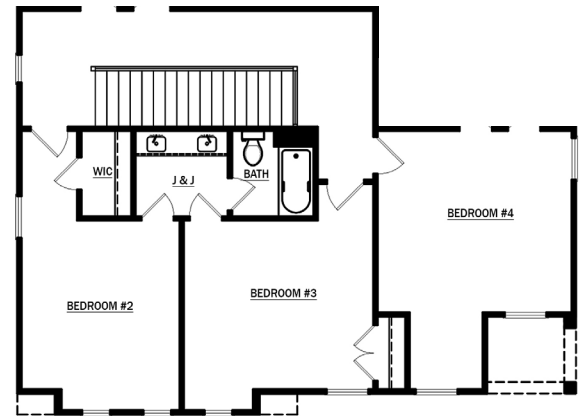
Revised 2-19-21

CARIE

HERON BAY



SECOND FLOOR



OPT. SECOND FLOOR
WITH 4TH BEDROOM

770-502-6230 | HeatherlandHomes.com



Prices, plans, elevations, square footage, specifications, materials, and included features are subject to change at any time without notice or obligation. Drawings, renderings, images, square footage, plans, elevations, features, colors and sizes are approximate and may vary from the actual homes built. © 2021 Tamra Wade Team of RE/MAX TRU (770) 502-6230. All rights reserved.

Revised 2-19-21

RE/MAX TRU
— POWERED BY —
TAMRA WADE