

MARSHALL

MIRROR LAKE - SOUTH HARBOUR



SHOWN IN OPTIONAL
ELEVATION A-3

5 Beds
3.5 Baths
4,000 Sq. Ft.



ELEVATION C-3

770-502-6230 | HeatherlandHomes.com



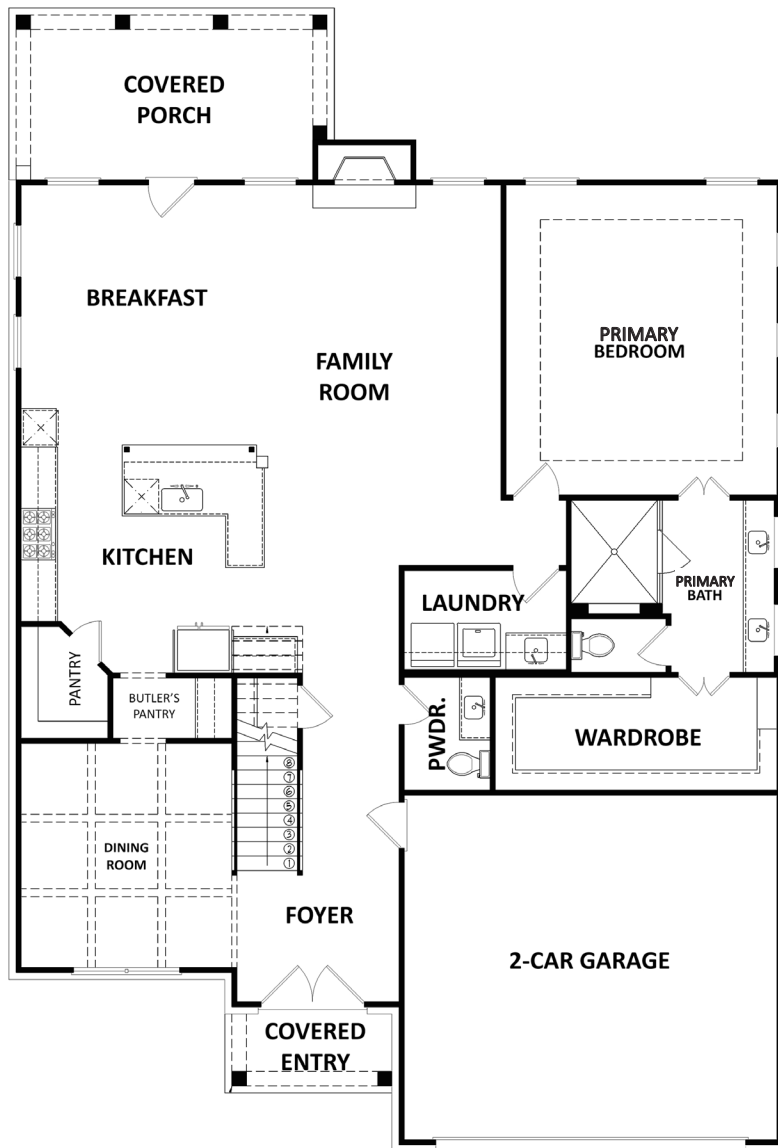
Prices, plans, elevations, square footage, specifications, materials, and included features are subject to change at any time without notice or obligation. Drawings, renderings, images, square footage, plans, elevations, features, colors and sizes are approximate and may vary from the actual homes built. © 2023 Tamra Wade Team of RE/MAX TRU (770) 502-6230. All rights reserved.

Revised 8-15-23

RE/MAX TRU
— POWERED BY —
TAMRA WADE

MARSHALL

MIRROR LAKE - SOUTH HARBOUR



FIRST FLOOR

770-502-6230 | HeatherlandHomes.com

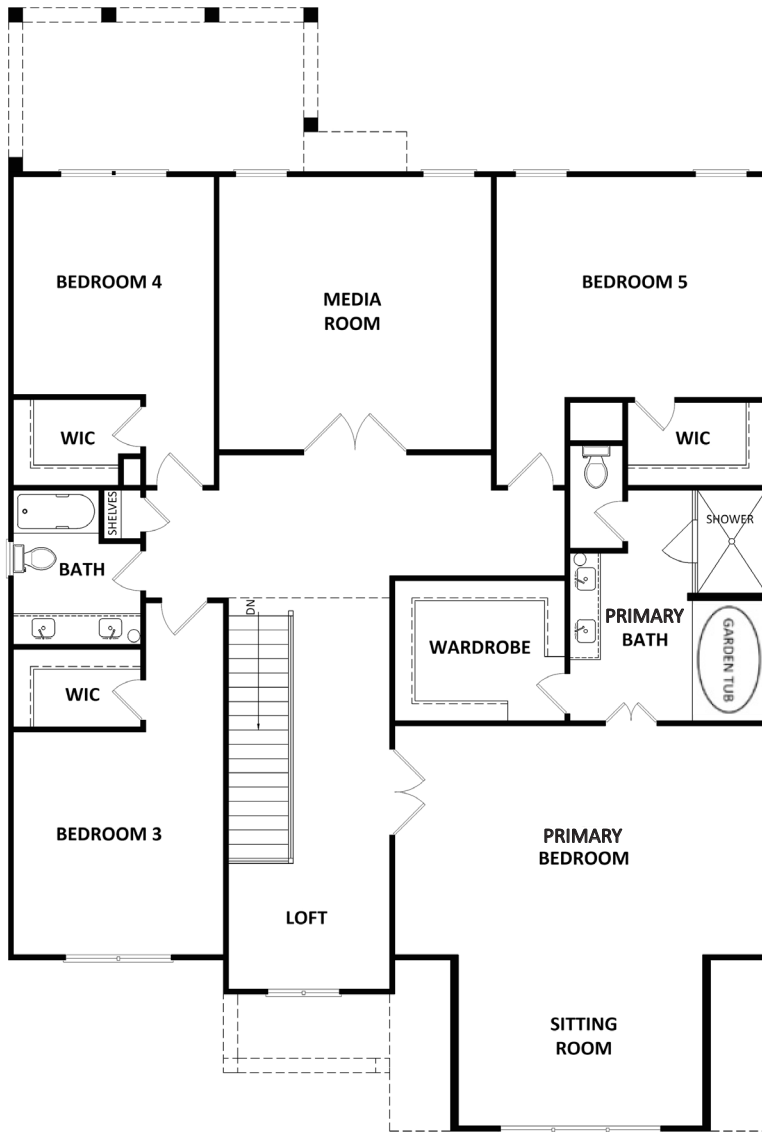


Prices, plans, elevations, square footage, specifications, materials, and included features are subject to change at any time without notice or obligation. Drawings, renderings, images, square footage, plans, elevations, features, colors and sizes are approximate and may vary from the actual homes built. © 2023 Tamra Wade Team of RE/MAX TRU (770) 502-6230. All rights reserved.

Revised 8-15-23

MARSHALL

MIRROR LAKE - SOUTH HARBOUR



SECOND FLOOR

770-502-6230 | HeatherlandHomes.com

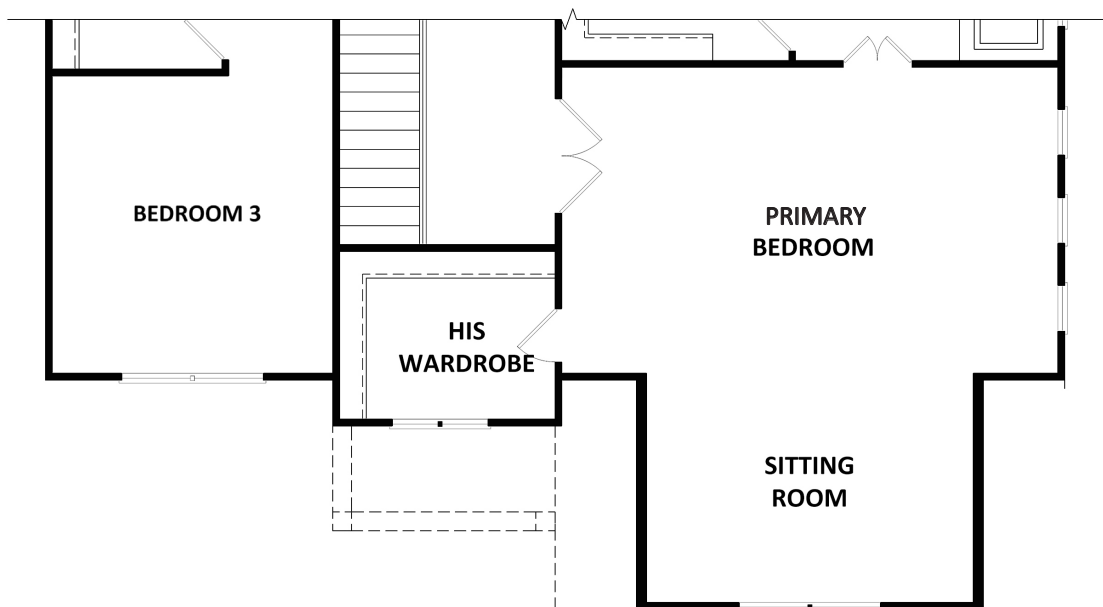


Prices, plans, elevations, square footage, specifications, materials, and included features are subject to change at any time without notice or obligation. Drawings, renderings, images, square footage, plans, elevations, features, colors and sizes are approximate and may vary from the actual homes built. © 2023 Tamra Wade Team of RE/MAX TRU (770) 502-6230. All rights reserved.

Revised 8-15-23

MARSHALL

MIRROR LAKE - SOUTH HARBOUR



SECOND FLOOR PLAN W/ OPT. 2ND CLOSET

770-502-6230 | HeatherlandHomes.com



Prices, plans, elevations, square footage, specifications, materials, and included features are subject to change at any time without notice or obligation. Drawings, renderings, images, square footage, plans, elevations, features, colors and sizes are approximate and may vary from the actual homes built. © 2023 Tamra Wade Team of RE/MAX TRU (770) 502-6230. All rights reserved.

Revised 8-15-23

RE/MAX TRU
— POWERED BY —
TAMRA WADE